

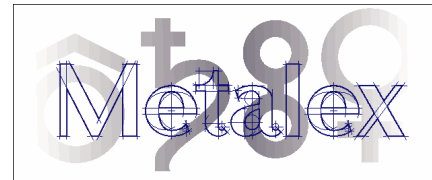
Lead Anode Plates (I)

○ Composition

- Sn 1.25% - 1.5%
- Ca 0.05% - 0.08%
- Pb per AS 1812 Balance
- Al > 0.02%

○ Grain Structure

- Hot rolled (wrought) plates
- Fine directionally uniform stable grains



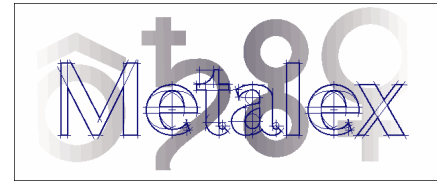
Lead Anodes (II)

- Casting
 - Plates produced from a cast slab hot rolled to thickness , cut and trimmed to size
 - Proprietary casting method at controlled temperature and pouring rate achieves high degree of control and retention of Ca in the alloy
 - Slab free of dross, porosity, laminations and voids

Lead Anodes (III)

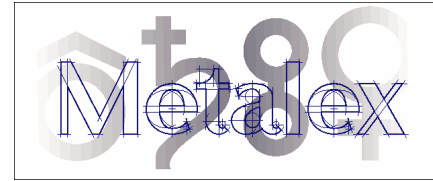
- Rolling
 - Planned set rolling procedure
 - Plate free of cracks, laminations and edge splitting
 - Homogenous grain structure
 - 100% visual inspection on both sides
 - Quality plan follows ISO 9002-1994
 - Analytical and Metallurgical Checks

Lead Anodes (IV)



Dimensional Tolerances (+/-)

- Blades
 - Flatness 3.0 mm
 - Diagonals 5.0 mm
 - Width 2.0 mm
 - Length 2.0 mm
 - Thickness 5.0 %



Lead Anodes (V)

Dimensional Tolerances (+/-)

- Bars
 - Straightness 25/L mm
 - Parallel 1.0 mm
 - Twist 2.0 mm
 - Width < 0.25 mm
 - Height < 0.25 mm

- Assembly Maximum +/- 8 mm vertical envelope when hanging